

# Conservation Reserve Program

CP33

## HABITAT BUFFERS FOR UPLAND BIRDS

Habitat Enhancement | Soil and Water Quality | Erosion Control



## Why Choose CRP? You Benefit Land, Water, and Wildlife.

The Conservation Reserve Program (CRP) provides farmers and landowners with various enrollment opportunities to achieve many farming, ranching, and conservation goals. Whatever the challenge—soil conservation, water quality protection, or wildlife habitat enhancement—CRP is a proven land performance and management solution.

## Why Upland Habitat Buffers?

Over the past several decades, field edges and hedgerows have been removed to create more cropland. These vegetative borders served an important ecological function that is now lost. Establishing buffers of native grasses and legumes around crop fields:

- Provides habitat for quail, pheasants, and other grassland birds with declining populations
- Reduces soil erosion
- Improves water quality by intercepting sediment and nutrients

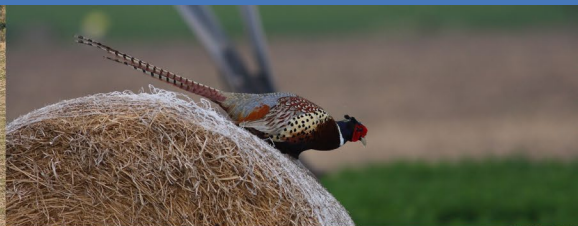
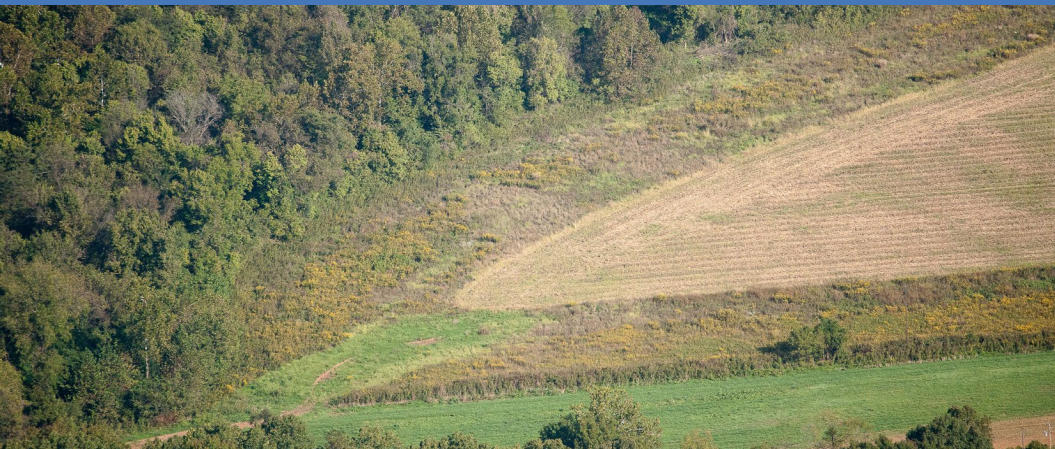
CP33 is offered in continuous sign-up. For more information on CRP sign-up types, visit [fsa.usda.gov](https://fsa.usda.gov).

## Financial Benefits

### CP33 participants receive:

- 10 years of annual rental payments
- 50% cost-share assistance for establishment costs
- A signing incentive payment (SIP) and a practice incentive payment (PIP)

Additional incentives may be available in your state under the Conservation Reserve Enhancement Program (CREP).



## Eligible Land

- Planted or considered planted at least 4 out of 6 years between 2012 and 2017
- Capable of being planted to an agricultural commodity
- Located around field edges suitable for quail and other upland birds
- Compliant with USDA's highly erodible land and wetland provisions

## Practice Requirements

- Prepare the site for growth of selected species
- Establish and maintain permanent vegetative cover
- Apply nutrients as needed to ensure growth
- Control noxious weeds and other undesirable plants, insects, and pests
- Maintain practice without additional cost-share payments

## Owner/Operator Eligibility

Participants must:

- Have owned or operated the land for at least 12 months prior to program sign-up
- Be in control of the land for the length of the contract
- Meet USDA payment eligibility provisions

## Obligations

Participants will:

- Not harvest or graze the practice area except under certain approved conditions
- Work with USDA-approved conservationist to develop a conservation plan
- Perform periodic management activities according to the conservation plan
- Complete practice establishment within 12 months of the effective date of the contract

## Proven Conservation Benefits

- In prime habitat, a 4% increase in CRP vegetation is associated with a 22% increase in pheasant counts
- CRP reduced nutrient losses in FY 2020 by an estimated 400 million pounds of nitrogen and 78 million pounds of phosphorus
- In 2020, CRP lowered greenhouse gas emissions by the equivalent of 30 million metric tons of CO<sub>2</sub>—the same benefit as taking nearly 6 million cars off the road

*FSA will ultimately determine participant and land eligibility.*

*For more information about FSA and its programs, visit [fsa.usda.gov](https://fsa.usda.gov) or contact your local FSA office. To find your local FSA office, visit [farmers.gov/service-locator](https://farmers.gov/service-locator).*