

Indiana Northern Bobwhite Quail SAFE

State Acres for Wildlife Enhancement (SAFE)



Overview

The U.S. Department of Agriculture (USDA) and Indiana Department of Natural Resources – Division of Fish and Wildlife are partners in implementing a State Acres for Wildlife Enhancement (SAFE) project to enroll agricultural land in 53 counties in the central and southern part of Indiana. The purpose of the Indiana Northern Bobwhite Quail SAFE is to provide quality grassland and shrubland habitat for Northern Bobwhite Quail as well as pollinators, and other grassland dependent birds of greatest conservation need in Indiana.

Background

SAFE is part of the USDA Conservation Reserve Program (CRP). CRP is a federally funded voluntary program that contracts with landowners and agricultural producers to establish and manage vegetative covers that control soil erosion, improve water quality, and provide wildlife habitat.

SAFE is a unique type of CRP that offers organizations the opportunity to partner with the USDA to establish habitat for high-priority wildlife species on agricultural land. SAFE sponsors work with the USDA to identify the wildlife species, the vegetative cover that provides habitat for the target species, and the location in the state where the habitat is needed. A partnership is formed between the SAFE sponsor and the USDA, and federal funds are made available to allow for CRP enrollment on eligible land within the SAFE project location.

Target Wildlife Species

The goal of the Indiana Northern Bobwhite Quail SAFE project is to provide habitat for Northern Bobwhite Quail. Northern Bobwhite Quail are important to Indiana because not only for biological significance but are also very important for economical and social reasons.

Habitat

Landowners and agricultural producers participating in Indiana Northern Bobwhite Quail SAFE are required to develop a conservation plan with assistance from the Natural Resources Conservation Service or a technical service provider. The conservation plan will provide details on how to plant, establish, and manage habitat for Northern Bobwhite Quail. The habitat being established, includes short stature native grasslands adjacent to shrub coverts and thickets while also immediately adjacent to sparse vegetative cover called early successional habitat. After the habitat is established, it will need to be maintained and managed via prescribed burning, vegetative release (spraying), disking, or inter-seeding in accordance with an approved conservation plan. Proper habitat establishment, maintenance, and management will maximize benefits for Northern Bobwhite Quail.

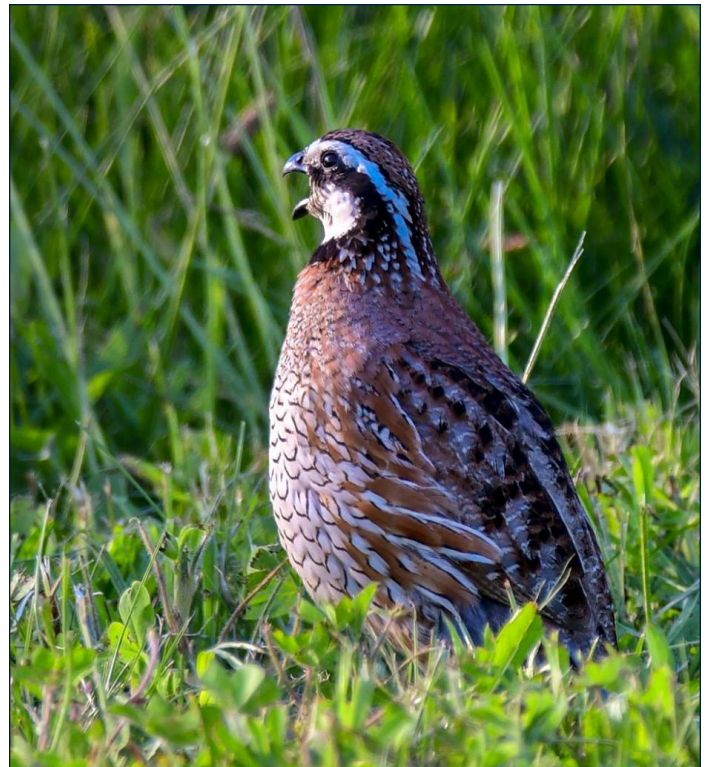


Photo by Indiana Department of Natural Resources (IDNR)

Project Location

The Indiana Northern Bobwhite Quail SAFE project location can be found in 3 eco-regions: Bird Conservation Region (BCR) 22-Tallgrass Prairie, BCR 23-Prairie Hardwood Transition, and BCR 24-Central Hardwoods.

This Northern Bobwhite SAFE project exists exclusively within the boundaries of Indiana. The counties targeted in the proposal include: Posey, Vanderburgh, Warrick, Spencer, Perry, Crawford, Dubois, Pike, Gibson, Knox, Daviess, Martin, Orange, Lawrence, Greene, Sullivan, Vigo, Clay, Owen, Monroe, Morgan, Putnam, Parke, Vermillion, Fountain, Tippecanoe, Montgomery, Johnson, Shelby, Rush, Wayne, Randolph, Jay, Blackford, Henry, Fayette, Union, Franklin, Decatur, Bartholomew, Brown, Jackson, Jennings, Ripley, Dearborn, Ohio, Switzerland, Jefferson, Scott, Clark, Washington, Harrison, and Floyd.

Eligible CRP Practices

This SAFE project uses the following CRP practices:

- ◆ CP38E-4D, SAFE Permanent Wildlife Habitat, Non-easement
- ◆ CP38E-12, Wildlife Food Plot

Haying and Grazing

The seeded area of any accepted offer in the proposal shall not be harvested or grazed by domestic livestock for the life of the CRP-1 contract.

Eligibility Requirements

Because SAFE is part of CRP, certain land and participant eligibility rules apply. To begin with, land must be in the project area and meet cropping history. CRP participant eligibility rules also apply to SAFE.

Payments and Incentives

In exchange for participation in CRP SAFE, the Farm Service Agency (FSA) provides participants with annual per acre rental payments, cost-share to assist with habitat establishment expenses, and in some cases additional monetary incentives.

For More Information

This fact sheet is provided for informational purposes only; other restrictions or requirements may apply. Consult your local FSA office for details. For more information, contact your local service center and USDA Farm Service Agency office: farmers.gov/service-locator.





Photo by Indiana Department of Natural Resources (IDNR)

Indiana Northern Bobwhite Quail SAFE Project Map



Legend

-  FSA County Boundary
-  Indiana Northern Bobwhite Quail SAFE Project Area