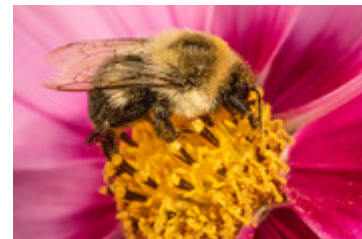


In This Issue:

- [USDA Expands Aquaculture Disaster Assistance in State to Include Fish Raised for Food](#)
- [USDA Offers Disaster Assistance for Producers Facing Inclement Weather](#)
- [USDA Extends General Signup for Conservation Reserve Program](#)
- [USDA Offers New Forest Management Incentive for Conservation Reserve Program](#)
- [Signature Policy](#)
- [Applying for Farm Storage Facility Loans](#)
- [Applying for FSA Direct Loans](#)
- [Applying for FSA Guaranteed Loans](#)

USDA Expands Aquaculture Disaster Assistance in State to Include Fish Raised for Food

In response to catastrophic aquaculture losses due to major winter storms that hit states along the U.S. Gulf Coast including State in February, the U.S. Department of Agriculture's (USDA) Farm Service Agency (FSA) today announced a policy change that makes food fish and other aquatic species eligible for the [Emergency Assistance for Livestock, Honey Bees and Farm-raised Fish Program \(ELAP\)](#). Previously, only farm-raised game and bait fish were eligible for death loss ELAP benefits. Beginning June 1, eligible aquaculture producers can request ELAP assistance for 2021 losses. This policy change is for the 2021 and subsequent program years.



ELAP provides financial assistance to eligible producers of livestock, honeybees and farm-raised fish for losses due to disease, certain adverse weather events or loss conditions, including blizzards and wildfires, as determined by the Secretary.

To be eligible, losses must have occurred on or after Jan. 1, 2021. For farm-raised fish and other aquatic species death losses only that occurred prior to June 1, 2021, FSA is waiving the requirement to file a notice of loss within 30 calendar days of when the loss is apparent. An aquaculture producer will still need to be able to provide contemporaneous records upon request to document the eligible loss event and demonstrate the beginning and ending inventory. The deadline to file an application for payment for the 2021 program year is Jan. 31, 2022.

Producers must provide acreage reports for the surface acres of water where their aquatic species are raised. Acreage reports for 2021 must be filed by Sept. 30, 2022.

More Information

USDA offers a comprehensive portfolio of disaster assistance programs. On [farmers.gov](#), the [Disaster Assistance Discovery Tool](#), [Disaster-at-a-Glance fact sheet](#), and [Farm Loan Discovery Tool](#) can help producers and landowners determine all program or loan options available for disaster recovery assistance. For assistance with a crop insurance claim, producers and landowners should contact their [crop insurance agent](#). For FSA and NRCS programs, they should contact their local [USDA Service Center](#).

USDA Offers Disaster Assistance for Producers Facing Inclement Weather



Severe weather events create significant challenges and often result in catastrophic loss for agricultural producers.

Despite every attempt to mitigate risk, your operation may suffer losses. USDA offers several programs to help with recovery.

Risk Management

For producers who have risk protection through [Federal Crop Insurance](#) or the [Noninsured Crop Disaster Assistance Program](#) (NAP), we want to remind you to report crop damage to your crop insurance agent or the local Farm Service Agency (FSA) office.

If you have crop insurance, contact your agency within 72 hours of discovering damage and be sure to follow up in writing within 15 days. If you have NAP coverage, file a Notice of Loss (also called Form CCC-576) within 15 days of loss becoming apparent, except for hand-harvested crops, which should be reported within 72 hours.

Disaster Assistance

USDA also offers disaster assistance programs, which is especially important to livestock, fruit and vegetable, specialty and perennial crop producers who have fewer [risk management options](#).

First, the [Livestock Indemnity Program](#) (LIP) and [Emergency Assistance for Livestock, Honeybee and Farm-raised Fish Program](#) (ELAP) reimburses producers for a portion of the value of livestock, poultry and other animals that died as a result of a qualifying natural disaster event or for loss of grazing acres, feed and forage. And, the [Livestock Forage Disaster Program](#) (LFP) provides assistance to producers of grazed forage crop acres that have suffered crop loss due to a qualifying drought. Livestock producers suffering the impacts of drought can also request [Emergency Haying and Grazing](#) on Conservation Reserve Program (CRP) acres.

Next, the [Tree Assistance Program](#) (TAP) provides cost share assistance to rehabilitate and replant tree, vines or shrubs loss experienced by orchards and nurseries. This complements NAP or crop insurance coverage, which cover the crop but not the plants or trees in all cases.

For LIP and ELAP, you will need to file a Notice of Loss for livestock and grazing or feed losses within 30 days and honeybee losses within 15 days. For TAP, you will need to file a program application within 90 days.

Documentation

It's critical to keep accurate records to document all losses following this devastating cold weather event. Livestock producers are advised to document beginning livestock numbers by taking time and date-stamped video or pictures prior to after the loss.

Other common documentation options include:

- Purchase records
- Production records
- Vaccination records
- Bank or other loan documents
- Third-party certification

Other Programs

The [Emergency Conservation Program](#) and [Emergency Forest Restoration Program](#) can assist landowners and forest stewards with financial and technical assistance to restore damaged farmland or forests.

Additionally, FSA offers a variety of loans available including emergency loans that are triggered by disaster declarations and operating loans that can assist producers with credit needs. You can use these loans to replace essential property, purchase inputs like livestock, equipment, feed and seed, or refinance farm-related debts, and other needs.

Meanwhile, USDA's Natural Resources Conservation Service (NRCS) provides financial resources through its [Environmental Quality Incentives Program](#) to help with immediate needs and long-term support to help recover from natural disasters and conserve water resources. Assistance may also be available for emergency animal mortality disposal from natural disasters and other causes.

Additional Resources

Additional details – including payment calculations – can be found on our [NAP](#), [ELAP](#), [LIP](#), and [TAP](#) fact sheets. On farmers.gov, the [Disaster Assistance Discovery Tool](#), [Disaster-at-a-Glance fact sheet](#), and [Farm Loan Discovery Tool](#) can help you determine program or loan options.

While we never want to have to implement disaster programs, we are here to help. To file a Notice of Loss or to ask questions about available programs, contact your local USDA Service Center. All [USDA Service Centers](#) are open for business, including those that restrict in-person visits or require appointments because of the pandemic.

USDA Extends General Signup for Conservation Reserve Program

The USDA is extending the Conservation Reserve Program (CRP) General Signup period, which had previously been announced as ending on Feb. 12, 2021. USDA will continue to accept offers as it takes this opportunity for the incoming Administration to evaluate ways to increase enrollment. Under the previous Administration, incentives and rental payment rates were reduced resulting in an enrollment shortfall of over 4 million acres. The program, administered by USDA's Farm Service Agency (FSA), provides annual rental payments for 10 to 15 years for land devoted to conservation purposes, as well as other types of payments. Before the General CRP Signup period ends, producers will have the opportunity to adjust or resubmit their offers to take advantage of planned improvements to the program.

This signup for CRP gives producers an opportunity to enroll land for the first time or re-enroll land under existing contracts that will be expiring Sept. 30, 2021. All interested producers, including those on Indian reservations and with trust lands, are encouraged to contact their local [USDA Service Center](#) for more information.

USDA Offers New Forest Management Incentive for Conservation Reserve Program

The U.S. Department of Agriculture (USDA) is making available \$12 million for use in making payments to forest landowners with land enrolled in the Conservation Reserve Program (CRP) in exchange for their implementing healthy forest management practices. Existing CRP participants can now sign up for the Forest Management Incentive (FMI), which provides financial incentives to landowners with land in CRP to encourage proper tree thinning and other practices.

Right now, less than 10% of land currently enrolled in CRP is dedicated to forestland. But, these nearly 2 million acres of CRP forestland, if properly managed, can have enormous benefits for natural resources by

reducing soil erosion, protecting water quality, increasing water quantity, and diversifying local farm operations and rural economies.

Only landowners and agricultural producers with active CRP contracts involving forest cover can enroll. However, this does not include active CRP contracts that expire within two years. Existing CRP participants interested in tree thinning and prescribed burning must comply with the standards and specifications established in their CRP contract.

CRP participants will receive the incentive payment once tree thinning and/or other authorized forest management practices are completed.

The incentive payment is the lower of:

- The actual cost of completing the practice; or
- 75% of the payment rate offered by USDA's Natural Resources Conservation Service (NRCS) if the practice is offered through NRCS conservation programs.

CRP signup is currently open. FSA will announce deadline later this year. Interested producers should contact their [local FSA county office](#).

Signature Policy

Using the correct signature when doing business with FSA can save time and prevent a delay in program benefits.

The following are FSA signature guidelines:

- A married woman must sign her given name: Mrs. Mary Doe, not Mrs. John Doe;
- For a minor, FSA requires the minor's signature and one from the minor's parent.

Note, by signing a document with a minor, the parent is liable for actions of the minor and may be liable for refunds, liquidated damages, etc.

When signing on one's behalf the signature must agree with the name typed or printed on the form or be a variation that does not cause the name and signature to be in disagreement. Example - John W. Smith is on the form. The signature may be John W. Smith or J.W. Smith or J. Smith. Or Mary J. Smith may be signed as Mrs. Mary Joe Smith, M.J. Smith, Mary Smith, etc.

FAXED signatures will be accepted for certain forms and other documents provided the acceptable program forms are approved for FAXED signatures. Producers are responsible for the successful transmission and receipt of FAXED information.

Examples of documents not approved for FAXED signatures include:

- Promissory note
- Assignment of payment
- Joint payment authorization
- Acknowledgement of commodity certificate purchase

Spouses may sign documents on behalf of each other for FSA and CCC programs in which either has an interest, unless written notification denying a spouse this authority has been provided to the county office.

Spouses cannot sign on behalf of each other as an authorized signatory for partnerships, joint ventures, corporations or other similar entities. Likewise, a spouse cannot sign a document on behalf of the other in order to affirm the eligibility of oneself.

Any member of a general partnership can sign on behalf of the general partnership and bind all members unless the Articles of Partnership are more restrictive. Spouses may sign on behalf of each other's individual interest in a partnership, unless notification denying a spouse that authority is provided to the county office. Acceptable signatures for general partnerships, joint ventures, corporations, estates, and trusts must consist of an indicator "by" or "for" the individual's name, individual's name and capacity, or individual's name, capacity, and name of entity.

For additional clarification on proper signatures, contact [your local FSA office](#).

Applying for Farm Storage Facility Loans

The Farm Service Agency's (FSA) Farm Storage Facility Loan (FSFL) program provides low-interest financing to help you build or upgrade storage facilities and to purchase portable (new or used) structures, equipment and storage and handling trucks.

Eligible commodities include corn, grain sorghum, rice, soybeans, oats, peanuts, wheat, barley, minor oilseeds harvested as whole grain, pulse crops (lentils, chickpeas and dry peas), hay, honey, renewable biomass, fruits, nuts and vegetables for cold storage facilities, floriculture, hops, maple sap, rye, milk, cheese, butter, yogurt, meat and poultry (unprocessed), eggs, and aquaculture (excluding systems that maintain live animals through uptake and discharge of water). Qualified facilities include grain bins, hay barns and cold storage facilities for eligible commodities.

Loans up to \$50,000 can be secured by a promissory note/security agreement, loans between \$50,000 and \$100,000 may require additional security, and loans exceeding \$100,000 require additional security.

You do not need to demonstrate the lack of commercial credit availability to apply. The loans are designed to assist a diverse range of farming operations, including small and mid-sized businesses, new farmers, operations supplying local food and farmers markets, non-traditional farm products, and underserved producers.

For more information, visit fsa.usda.gov/pricesupport.

Applying for FSA Direct Loans

FSA offers direct farm ownership and direct farm operating loans to producers who want to establish, maintain, or strengthen their farm or ranch. Direct loans are processed, approved and serviced by FSA loan officers.

Direct farm operating loans can be used to purchase livestock and feed, farm equipment, fuel, farm chemicals, insurance, and other costs including family living expenses. Operating loans can also be used to finance minor improvements or repairs to buildings and to refinance some farm-related debts, excluding real estate.

Direct farm ownership loans can be used to purchase farmland, enlarge an existing farm, construct and repair buildings, and to make farm improvements.

The maximum loan amount for direct farm ownership loans is \$600,000 and the maximum loan amount for direct operating loans is \$400,000 and a down payment is not required. Repayment terms vary depending on

the type of loan, collateral and the producer's ability to repay the loan. Operating loans are normally repaid within seven years and farm ownership loans are not to exceed 40 years.

Please contact [your local FSA office](#) for more information or to apply for a direct farm ownership or operating loan.

Applying for FSA Guaranteed Loans

FSA guaranteed loans allow lenders to provide agricultural credit to farmers who do not meet the lender's normal underwriting criteria. Farmers and ranchers apply for a guaranteed loan through a lender, and the lender arranges for the guarantee. FSA can guarantee up to 95 percent of the loss of principal and interest on a loan. Guaranteed loans can be used for both farm ownership and operating purposes.

Guaranteed farm ownership loans can be used to purchase farmland, construct or repair buildings, develop farmland to promote soil and water conservation or to refinance debt.

Guaranteed operating loans can be used to purchase livestock, farm equipment, feed, seed, fuel, farm chemicals, insurance and other operating expenses.

FSA can guarantee farm ownership and operating loans up to \$1,776,000. Repayment terms vary depending on the type of loan, collateral and the producer's ability to repay the loan. Operating loans are normally repaid within seven years and farm ownership loans are not to exceed 40 years.

For more information on guaranteed loans, contact [your local FSA office](#) or visit fsa.usda.gov.

South Carolina Farm Service Agency

1927 Thurmond Mall
Suite 100
Columbia, SC 29201

Phone: 803.806-3820
Website: www.fsa.usda.gov/sc

Acting State Executive Director

Kenn Jameson
kenn.jameson@usda.gov

Administrative Officer

Kenn Jameson
kenn.jameson@usda.gov

Farm Programs Chief

Evelyn Whitesides
evelyn.whitesides@usda.gov

Farm Loan Programs Chief

William Shelley
william.shelley@usda.gov

State Committee

Anthony Grant, Chairperson
Robert Battle
Bill Sarratt
Landy Weathers
Beth White