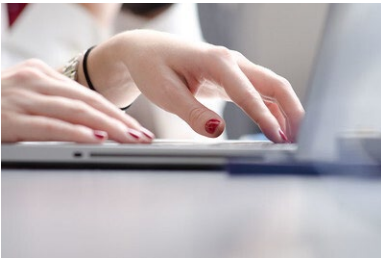




- [Message From the County Office](#)
- [Attention all Buyers of Agricultural Products](#)
- [Reminders for FSA Direct and Guaranteed Borrowers with Real Estate Security](#)
- [Important Deadlines](#)

Message From the County Office



Update Your Records

As we approach the start of a new fiscal year FSA encourages early reporting of any changes to your operation in which you reorganize to form a Trust, LLC or other legal entity. Making these changes now will reduce the possibility of program eligibility complications later in the year. In addition, FSA is cleaning up our producer record database and needs your help. Please report any changes of address, zip code, phone number, email address, bank accounts for direct deposit, or an incorrect name or business

name on file to our office. FSA and NRCS program participants are required to promptly report changes in their farming operation to the County Committee in writing and to update their *Farm Operating Plan* on form CCC-902.

NAP Information

Producers with NAP coverage in 2023 are urged to report their harvested production. FSA can supply maps for you to record your harvested production on a field-by-field basis. Timely and accurately reporting these yields is key to your farm's Actual Production History (APH) and indemnity payments. Producers with no harvested production must have an appraisal completed prior to grazing the acreage. Failure to do this will result in a reduced indemnity payment.

Interested in NAP for 2024?

In order to benefit in 2024 you must be enrolled in the program and have purchased coverage for the eligible crop you produce in the crop year, in which the loss incurred, due to a qualifying natural disaster. **December 1, 2023** is the final day to enroll fall seeded crops, perennial forage and honey for the 2024 program year.

NAP Service Fees

NAP offers varying levels of coverage, from 50 to 65 percent of expected production in 5 percent increments. Buy-up levels of NAP coverage are available if the producer can show at least one year of previously successfully growing the crop for which coverage is being requested. For all coverage levels, the NAP service fee is the lesser of \$325 per crop or \$825 per producer per county, not to exceed a total of \$1,950 for a producer with farming interests in multiple counties. Beginning, limited resource and targeted underserved farmers or ranchers remain eligible for a waiver of NAP service fees and premium reduction when they file form CCC-860, "*Socially Disadvantaged, Limited Resource and Beginning Farmer or Rancher Certification*."

Loan Deficiency Payments (LDP)

For those producers that will be or that have shorn their sheep, and are interested in receiving a wool LDP, you must sign the CCC-633EZ page 1, prior to losing beneficial interest. If you have already signed page 1, you will be required to furnish the following information on page 4 of the CCC-633EZ to receive an LDP:

1. Certified or production evidence of wool weights with receipts.
2. Flock size, which includes the number of ewes, yearlings and rams shorn.

3. Shearing date.
4. The breed of your sheep.

The CCC-633EZ page 4, will then need to be signed, dated, and shares entered.

The graphic features the USDA Farm Service Agency logo at the top left. Below it, the text reads "BE THE LINK between your agricultural community and the USDA". The central illustration shows a diverse group of seven people standing in a field with a red barn in the background. Below this, the title "2023 COUNTY COMMITTEE ELECTIONS" is displayed in large white letters on a dark blue background. Five circular icons represent key dates and events:

- JUN. 15, 2023**: Beginning of nomination period. Forms available at fsa.usda.gov/elections.
- AUG. 1, 2023**: Last day to file nomination forms at the local FSA county office.
- NOV. 6, 2023**: Ballots mailed to eligible voters.
- DEC. 4, 2023**: Last day to return voted ballots to the local FSA county office.
- JAN. 1, 2024**: Newly elected county committee members take office.

Attention all Buyers of Agricultural Products

It is required that buyers of agricultural products check or register with the Secretary of State's Office to determine if there are liens against the Seller of the product. If a lien is found, you are required to place the lien holder's name on the check as well as that of the Seller. Ag Products include but are not limited to: livestock (including horses), crops used for feed (hay, silage, oats, etc.), machinery, equipment and all other crops. **Failure to place the lien holder's name on the check may result in civil legal action being taken against the Buyer of the product. Protect yourself as a Buyer!** You may contact the Secretary of State's Office at 1-307-777-7311.

Gillette NRCS Field Office 2023 EQIP Obligations



The Gillette NRCS Filed Office obligated 18 new EQIP contracts for a total of \$2,881,364. Most of this funding, \$1,884,884, came from the Big Game Migration account. This will be used to replace old barbed and woven wire fences with new wildlife friendly fences. The balance of the funding will be used to spray invasive annual grasses and assist producers with planting cover crops. If you are interested in financial assistance with any conservation related projects, please call the Gillette Field Office at 307-682-8843 x3 for information about the application and funding process.

Reminders for FSA Direct and Guaranteed Borrowers with Real Estate Security

Farm loan borrowers who have pledged real estate as security for their Farm Service Agency (FSA) direct or guaranteed loans are responsible for maintaining loan collateral. Borrowers must obtain prior consent or approval from FSA or the guaranteed lender for any transaction that affects real estate security. These transactions include, but are not limited to:

- Leases of any kind
- Easements of any kind
- Subordinations
- Partial releases
- Sales

Failure to meet or follow the requirements in the loan agreement, promissory note, and other security instruments could lead to nonmonetary default which could jeopardize your current and future loans. It is critical that borrowers keep an open line of communication with their FSA loan staff or guaranteed lender when it comes to changes in their operation. For more information on borrower responsibilities, read [Your FSA Farm Loan Compass](#).

Important Deadlines

September 4th: Office Closed in Observance of Labor Day
 September 12th: ERP Phase 2 and PARP Deadline
 October 1st: Start of Fiscal Year 2024



Campbell County USDA Service Center

601 4J Court Suite B
 Gillette, WY 82716

Phone: 307-682-8843
 Fax: 855-4415-3431

FSA Staff

County Executive Director:

Pamela Smith 307-696-4450
pamela.s.smith@usda.gov

Farm Loan Manager:

Eilish Hanson 307-696-4459
eilish.hanson@usda.gov

Farm Loan Analyst:

William Yount 307-696-4451
william.yount2@usda.gov

Key Farm Loan Program Technician

NRCS Staff

District Conservationist:

Tim Kellogg 307-696-4446
tim.kellogg@usda.gov

Rangeland Management Specialist:

Brandon Elkins 307-696-4456
brandon.elkins@usda.gov

Private Lands Wildlife Biologist:

Harold Campbell
harold.campbell@usda.gov

Program Assistant:

Amber Fowlkes 307-696-4447
amber.fowlkes@usda.gov

Farm Program Technicians:

Judy Bishop 307-696-4452
judy.bishop@usda.gov

Shelby Cooper 307-696-4445
shelby.cooper@usda.gov

FSA County Committee:

Gwen Geis - Chairperson
Jake Boller- Vice-Chairperson
Rori Coates- Member

Jessica Van Woerkom 307-696-4454
jessica.vanwoerkom@usda.gov

Campbell County Conservation District:

Cheyenne Love & Crystal Kellebrew
Office: 307-682-1824
Cell: 307-670-0200

Next County Committee Meeting
September 6th, 2023