



- [Farm Service Agency Now Accepting Nominations for Farmers and Ranchers to Serve on Local County Committees](#)
- [Acreage Reports](#)
- [Signup for Pandemic Assistance Revenue Program](#)
- [Loans for Targeted Underserved Producers](#)
- [SMART Nutrient Management Means Savings on Fertilizer Costs, Healthier Soil, and Improved Water Quality](#)
- [Dates To Remember](#)

Farm Service Agency Now Accepting Nominations for Farmers and Ranchers to Serve on Local County Committees



The U.S. Department of Agriculture (USDA) is now accepting nominations for county committee members. Elections will occur in certain Local Administrative Areas (LAA) for members. LAAs are elective areas for [Farm Service Agency](#) (FSA) committees in a single county or multi-county jurisdiction.

County committee members make important decisions about how Federal farm programs are administered locally. All nomination forms for the 2023 election must be postmarked or received in the local FSA office by Aug. 1, 2023. Agricultural producers may be nominated for candidacy for the county committee if they:

- Participate or cooperate in a USDA program;
- Reside in the LAA that is up for election this year; and
- Meet basic eligibility requirements.

A cooperating producer is someone who has provided information about their farming or ranching operation to FSA, even if they have not applied or received program benefits. Customers can locate their LAA through a new GIS locator tool available at fsa.usda.gov/elections.

Individuals may nominate themselves or others and qualifying organizations may also nominate candidates. USDA encourages minority producers, women, and beginning farmers or ranchers to nominate, vote and hold office.

Committee members are vital to how FSA carries out disaster programs, as well as conservation, commodity and price support programs, county office employment and other agricultural issues.

More Information Producers should contact their local FSA office today to register and find out how to get involved in their county's election, including if their LAA is up for election this year. To be considered, a producer must be registered and sign an [FSA-669A](#) nomination form. The form and other information about FSA county committee elections are available at fsa.usda.gov/elections.

Election ballots will be mailed to eligible voters beginning Nov. 6, 2023. his placeholder text.

Acreage Reports

In order to maintain program eligibility and benefits, you must timely file acreage reports. Failure to file an acreage report by the crop acreage reporting deadline may result in ineligibility for future program benefits. FSA will not accept acreage reports provided more than a year after the acreage reporting deadline.

Reporting Grazing Allotments: FSA offices can now accept acreage reports for grazing allotments. You will use form "FSA-578" to report grazing allotments as animal unit months (AUMs) using the "Reporting Unit" field. Your local FSA office will need the grazing period start and end date and the percent of public land.



Definitions of Terms

FSA defines "idle" as cropland or a balance of cropland within a Common Land Unit (CLU) (field/subfield) which is not planted or considered not planted and does not meet the definition of fallow or skip row.

Fallow is considered unplanted cropland acres which are part of a crop/fallow rotation where cultivated land that is normally planted is purposely kept out of production during a regular growing season.

For more information on documentation requirements, contact your Platte County USDA Service Center at 307-322-4050 or visit fsa.usda.gov.

Signup for Pandemic Assistance Revenue Program

The Pandemic Assistance Revenue Program (PARP) will assist eligible producers of agricultural commodities who experienced revenue decreases in calendar year 2020 compared to 2018 or 2019 due to the COVID-19 pandemic. PARP will help address gaps in previous pandemic assistance, which was targeted at price loss or lack of market access, rather than overall revenue losses.

USDA's Farm Service Agency will accept PARP applications from January 23, 2023, through June 2, 2023. **Just extended to July 14, 2023**



Eligible and Ineligible Commodities

For PARP, eligible agricultural commodities include crops, aquaculture, livestock, livestock byproducts, or other animals or animal byproducts that are produced as part of a farming operation and are intended to be commercially marketed. This includes only commodities produced in the United States or those produced outside the United States by a producer located in the United States and marketed inside the United States.

The following commodities **are not eligible** for PARP:

- Wild free-roaming animals.
- Horses and other animals used or intended to be used for racing or wagering.
- Aquatic species that do not meet the definition of aquaculture.
- *Cannabis sativa L.* and any part of that plant that does not meet the definition of hemp.
- Timber.

Program Eligibility

PARP payments will be made on a whole-farm basis, not commodity-by-commodity. To be eligible for PARP, an agricultural producer must have been in the business of farming during at least part of the 2020 calendar year and must have experienced a 15 percent decrease in allowable gross revenue in 2020, as compared to either:

- The 2018 or 2019 **calendar year**, as elected by the producer, if they received allowable gross revenue during the 2018 or 2019 **calendar years**, or
- The producer's expected 2020 calendar year allowable gross revenue, if the producer had no allowable gross revenue in 2018 or 2019.

PARP payments will be issued after the application period ends on June 2, 2023.

For more information on determining allowable gross revenue visit farmers.gov/coronavirus/pandemic-assistance/parp or review the [PARP fact sheet](#).

More Information

To apply for PARP, contact your [local USDA Service Center](#).

Loans for Targeted Underserved Producers

The Farm Service Agency (FSA) has several loan programs to help you start or continue an agriculture production. Farm ownership and operating loans are available.

While all qualified producers are eligible to apply for these loan programs, FSA has provided priority funding for members of targeted underserved applicants.

A targeted underserved applicant is one of a group whose members have been subjected to racial, ethnic or gender prejudice because of his or her identity as members of the group without regard to his or her individual qualities.

For purposes of this program, targeted underserved groups are women, African Americans, American Indians, Alaskan Natives, Hispanics, Asian Americans and Pacific Islanders.

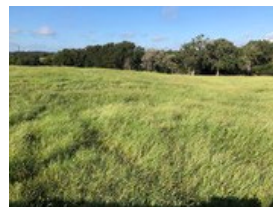
FSA loans are only available to applicants who meet all the eligibility requirements and are unable to obtain the needed credit elsewhere.

SMART Nutrient Management Means Savings on Fertilizer Costs, Healthier Soil, and Improved Water Quality

USDA's Natural Resources Conservation Service (NRCS) works with farmers to develop nutrient management plans that optimize plant yields while reducing the amount of nutrients lost to the environment, where they can impact greenhouse gas emissions and air and water quality.

SMART Nutrient Management includes the 4Rs of nutrient stewardship – the right Source, right Method, right Rate, and right Timing – and emphasizes smart activities to reduce nutrient loss by Assessment of comprehensive, site-specific conditions.

A SMART Nutrient Management Plan considers all conditions on the farm and how they influence one another. It is tailored to the unique farm location, soil, climate, crops grown, management conditions, and other site-specific factors. Visit your local NRCS field office to learn more or click [How to Get Started with Nutrient Management | Farmers.gov](#).



Dates To Remember

July 4, 2023 -- Office closed in observance of Independence Day

July 14, 2023 – Deadline to apply for the PARP or ERP2 program

July 17, 2023 – Acreage reporting deadline for all crops planted prior to July 15, 2023



USDA Service Center

1502 Progress Ct
Wheatland, WY 82201

Phone: 307-322-4050
Fax: 855-415-3444

Pamela Metz
County Executive Director
pamela.metz@usda.gov

Chris Campton
District Conservationist
christopher.campton@usda.gov

Rob Weppener
Farm Loan Manager
rob.weppner@usda.gov

NRCS Staff
Jenna Lincoln-Range Specialist
Kathleen Bush-Range Specialist

Heather Ferguson-Ultima

Kelly Brown-Farm Programs PT
kelly.brown3@usda.gov

County Committee:
Amy Miller
Dareth Smialek
Chuck Maike

Heidi Platt-Farm Loan Analyst
heidi.platt@usda.gov

Next County Committee Meeting:
TBD

Anna Troupe-Farm Loan PT
anna.troupe@usda.gov