



- [From Lisa's Desk](#)
- [USDA Announces Grassland Conservation Reserve Program Signup for 2023](#)
- [Myth-Busting FSA's New Revenue-Based Disaster and Pandemic Assistance Programs](#)
- [NRCS is Now Accepting Agricultural Management Assistance \(AMA\) Applications Applications Must be received by June 1, 2023](#)

## From Lisa's Desk

Hello Washakie and Hot Springs County Producers:

Grassland CRP is open for enrollment until 5/26/2023. Please read the article below.

Also, there is an interesting article discussing the myths of PARP and ERP2. The PARP and ERP2 application deadline is 6/2/2023.

The deadline to apply for LFP, LIP and ELAP for recreational animals is also 6/2/2023. The articles were in a previous bulletin, but please call the office with any questions.

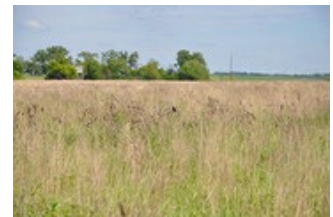
Finally, NRCS has included an interesting article on Agricultural Management Assistance (AMA) Applications.

Please call the Washakie-Hot Springs County office if you have questions or need assistance with an application. The phone number is 307-347-2456 ext. 2.

Enjoy the beautiful spring weather and best wishes,

Lisa Bower

County Executive Director

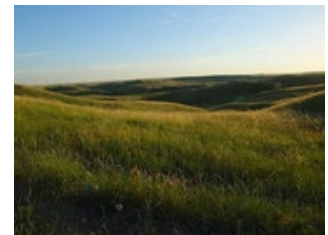


---

## USDA Announces Grassland Conservation Reserve Program Signup for 2023

USDA announced that agricultural producers and private landowners can begin signing up for the Grassland Conservation Reserve Program (CRP) starting today and running through May 26, 2023. Among CRP enrollment opportunities, Grassland CRP is a unique working lands program, allowing producers and landowners to continue grazing and haying practices while conserving grasslands and promoting plant and animal biodiversity as well as healthier soil.

More than 3.1 million acres were accepted through the 2022 Grassland CRP signup from agricultural producers and private landowners. That signup—the highest ever for the program—reflects the continued success and value of investments in voluntary, producer-led, working lands conservation programs. The current total participation in Grassland CRP is 6.3 million acres, which is part of the 23 million acres enrolled in CRP opportunities overall.



Since 2021, USDA's FSA, which administers all CRP programs, has made several improvements to Grassland CRP to broaden the program's reach, including:

- Creating two [National Priority Zones](#) to put focus on environmentally sensitive land such as that prone to wind erosion.
- Enhancing offers with 10 additional ranking points to producers and landowners who are historically underserved, including beginning farmers and military veterans.
- Leveraging the [Conservation Reserve Enhancement Program](#) (CREP) to engage historically underserved communities within Tribal Nations in the Great Plains.

### How to Sign Up for Grassland CRP

Landowners and producers interested in Grassland CRP, or any other CRP enrollment option, should contact their local [USDA Service Center](#) to learn more or to apply for the program before the deadlines.

Producers with expiring CRP acres can enroll in the Transition Incentives Program (TIP), which incentivizes producers who sell or enter into a long-term lease with a beginning, veteran, or socially disadvantaged farmer or rancher who plans to sustainably farm or ranch the land.

### Other CRP Signups

Under [Continuous CRP](#), producers and landowners can enroll throughout the year. Offers are automatically accepted provided the producer and land meet the eligibility requirements and the enrollment levels do not exceed the statutory cap. Continuous CRP includes a Climate-Smart Practice Incentive to increase carbon sequestration and reduce greenhouse gas emissions by helping producers and landowners establish trees and permanent grasses, enhance wildlife habitat, and restore wetlands.

FSA offers several additional enrollment opportunities within Continuous CRP, including the State Acres for Wildlife Enhancement (SAFE) Initiative, the Farmable Wetlands Program (FWP), and the Conservation Reserve Enhancement Program (CREP). Also available is the Clean Lakes Estuaries and Rivers (CLEAR30) Initiative, which was originally piloted in twelve states but has since been expanded nationwide, giving producers and landowners across the country the opportunity to enroll in 30-year CRP contracts for water quality practices.

---

## Myth-Busting FSA's New Revenue-Based Disaster and Pandemic Assistance Programs

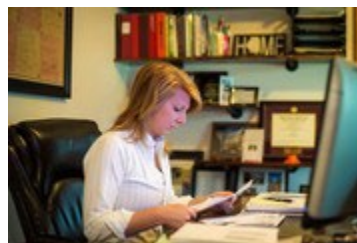
*A Message from FSA Administrator Zach Ducheneaux*

In January, we announced two new programs designed to assist producers who experienced revenue losses from 2020 and 2021 natural disasters or the COVID-19 pandemic. These programs are revenue-based and feel a little different from our regular programs, but the goal is to better support farmers.

Both the [Emergency Relief Program \(ERP\) Phase Two](#) and the [Pandemic Assistance Revenue Program \(PARP\)](#) offer a holistic approach to disaster assistance and provide economic support for producers who bear the financial brunt of circumstances beyond their control.

With the rollout of any new program, there is a learning curve for producers and employees alike. ERP Phase Two and PARP are no exception. To encourage producer participation in these valuable programs, I'm going to do my best to debunk some myths and misconceptions surrounding ERP Phase Two and PARP.

With a June 2, 2023, deadline to apply for both programs, it's important that we clear up confusion about how to apply, what documents are required for participation, insurance requirements and related misinformation making its way across the countryside.



Now, let's do some myth-busting.

**Myth #1 – You need to submit a completed tax return to FSA to apply for ERP Phase Two or PARP.**

While these programs are based on revenue losses, you do not need a tax return, completed or otherwise, to apply for assistance. In fact, we have an [ERP Phase 2 tool](#) and [PARP tool](#) that walk you through the process step by step.

We understand that you may have questions for your certified public accountant or tax preparer, who was likely been hard to reach prior to the April 18 Internal Revenue Service tax deadline but we encourage you to download the program decision tools and get started. You'll probably discover that you already have on hand much of the information you need.

The following supporting materials will help you:

- Schedule F (Form 1040); and
- *Profit or Loss from Farming* or similar tax documents for tax years 2018, 2019, 2020, 2021, and 2022 for ERP and for calendar years 2018, 2019, and 2020 for PARP.

The only reason you *might* have to provide your tax returns to FSA is in the event of a spot check or a request from the FSA County Committee.

Producers can [register for a free webinar](#) hosted by USDA and members of the National Farm Income Tax Extension Committee on Monday, May 1 at 2 p.m. eastern for a discussion on completing the ERP Phase Two application form.

**Myth #2 – You cannot receive an ERP Phase Two payment if you received a payment under Phase One.**

It's possible that you can still receive ERP Phase Two benefits if you received an ERP Phase One payment. There is also a possibility that your Phase Two payment may be offset.

**Myth #3 – ERP Phase Two was intended to be an additional payment to those who received payment under Phase One.**

ERP Phase Two was never designed or intended to be an additional payment. Instead, it was intended to assist those producers who did not receive relief in Phase One.

[Click here to read the full blog and view a producer testimonial on the application process.](#)

---

## NRCS is Now Accepting Agricultural Management Assistance (AMA) Applications Applications Must be received by June 1, 2023

CASPER, Wyo. May 2, 2023 – USDA's Natural Resources Conservation Service (NRCS) in Wyoming is currently accepting applications for enrollment into the Agricultural Management Assistance (AMA) program. This enrollment is specifically for the AMA - Risk Management Agency (RMA). AMA-RMA is a voluntary Farm Bill program which provides financial assistance for High tunnels and facilitating practices. **Producers interested in implementing conservation practices to improve natural resources on their private agricultural land have until June 1, 2023 to submit applications.**



**Producers must have farm records current with the Farm Service Agency and submit a complete program application to NRCS to be considered for financial assistance through AMA-RMA.**

Applications are accepted at all Wyoming NRCS offices located in USDA Service Centers across the state.

To find out more information about EQIP please visit the [AMA webpage](#). To locate an NRCS field office near you, please visit the [USDA Service Center webpage](#).

When visiting with NRCS staff about the AMA program, landowners are encouraged to inquire about NRCS' comprehensive conservation plans. The Agency continually strives to put conservation planning at the forefront of its programs and initiatives. Conservation plans provide landowners with a comprehensive inventory and assessment of their resources, as well as an appropriate start to improving the quality of soil, water, air, plants, and wildlife on their land.



## USDA Service Center

208 Shiloh RD  
Worland, WY 82401

Phone: 307-347-2456  
NRCS FAX: 855-415-3405  
FSA FAX: 855-415-3445  
RD FAX: 855-415-3424

### **FSA:**

#### **County Executive Director, CED**

Lisa Bower 307-347-2456 x 112  
[lisa.bower@usda.gov](mailto:lisa.bower@usda.gov)

#### **Program Technician**

Sarah Sinn 307-347-2456 x 100  
[sarah.sinn@usda.gov](mailto:sarah.sinn@usda.gov)

#### **Program Technician, temp**

Jennifer Ray 307-347-2456 x 105  
[jennifer.ray@usda.gov](mailto:jennifer.ray@usda.gov)

#### **Farm Loan Manager**

Jolene Beiswenger 307-347-2456 x 111  
[jolene.beiswenger@usda.gov](mailto:jolene.beiswenger@usda.gov)

#### **Farm Loan Analyst**

Kelli Emmett 307-347-2456 x 102  
[kelli.emmett@usda.gov](mailto:kelli.emmett@usda.gov)

### **County Committee:**

Julie Haun, Chairperson  
Jim Butterfield, Vice Chairperson  
Billie Jo Norsworthy, Member  
Cameron Roady, Member  
Marilyn Vass, Member

### **NRCS:**

#### **District Conservationist**

Emma Allen 307-347-2456 x 108  
[emma.allen@usda.gov](mailto:emma.allen@usda.gov)

#### **Civil Engineer**

Allen Croft 307-347-2456 x 122 [allen.croft@usda.gov](mailto:allen.croft@usda.gov)

#### **Multi County Rangeland Management Specialist**

Blaise Allen 307-347-2456 x 109  
[blaise.allen@usda.gov](mailto:blaise.allen@usda.gov)

#### **Natural Resources Specialist**

Kaile Brant 307-347-2456 x 119  
[kaile.brant@usda.gov](mailto:kaile.brant@usda.gov)

#### **Soil Conservationist**

Errick Hayes 307-347-2456 x 107  
[errick.hayes@usda.gov](mailto:errick.hayes@usda.gov)

#### **Rangeland Management Specialist**

Caleb Salzman, 307-347-2456 x114  
[caleb.salzman@usda.gov](mailto:caleb.salzman@usda.gov)

